

RECREATIONAL RESOURCES MAP
OF
GILFORD
NEW HAMPSHIRE

SCALE: 1" = 5000'

0 1,250 2,500 5,000 7,500 10,000 12,500

0.5 0.25 0 0.5 1 1.5

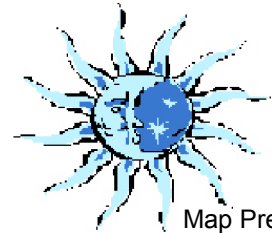
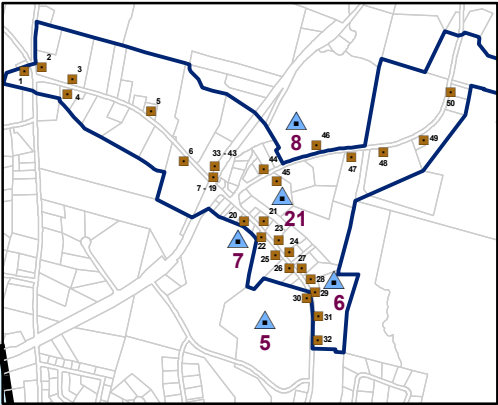
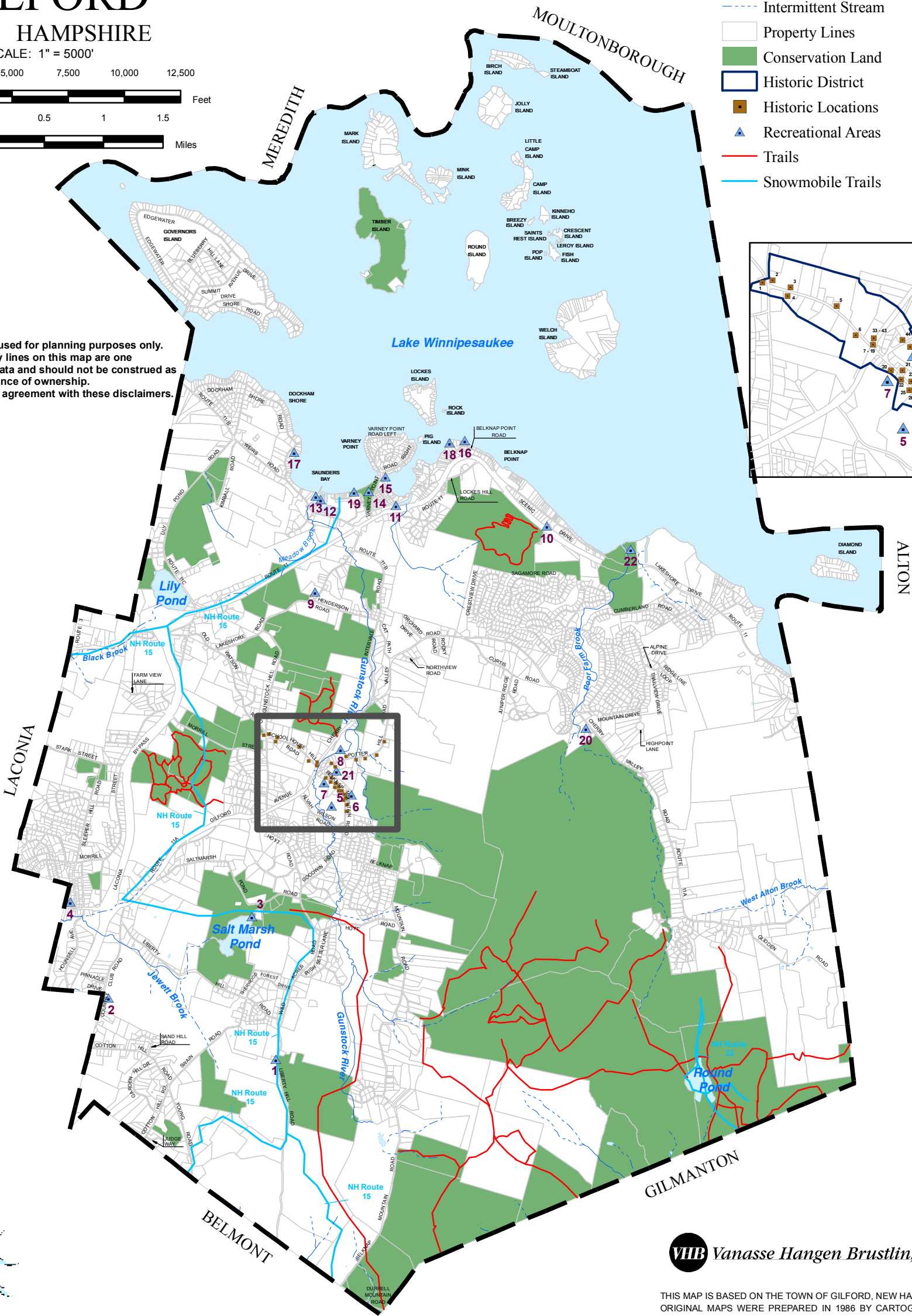
Feet

Miles

Legend

- Perennial Stream
- Intermittent Stream
- Property Lines
- Conservation Land
- Historic District
- Historic Locations
- Recreational Areas
- Trails
- Snowmobile Trails

This map is intended to be used for planning purposes only. Representations of property lines on this map are one interpretation of available data and should not be construed as binding or conclusive evidence of ownership. Use of this map constitutes agreement with these disclaimers.



Map Prepared By Blue Moon Environmental, Inc.

VHB Vanasse Hangen Brustlin, Inc.



THIS MAP IS BASED ON THE TOWN OF GILFORD, NEW HAMPSHIRE PROPERTY MAPS. ORIGINAL MAPS WERE PREPARED IN 1986 BY CARTOGRAPHIC ASSOCIATES, INC. A MAJOR REVISION OF THE MAPS AND DIGITAL DATA WAS PRODUCED IN 2005. THIS MAP IS INTENDED FOR REFERENCE AND PLANNING PURPOSES ONLY.

Town of Gilford
New Hampshire
Recreational Resources Map

Recreational Areas	
Num	Location
1	Camp Winsheble
2	Pheasant Ridge Country Club
3	Saltmarsh Pond
4	Baldic Park
5	Middle/High School
6	Gilford Elementary School
7	Village Field
8	Town Skateboard Park
9	Gilford Hills Club
10	Scenic Outlook
11	Gilford Yacht Club
12	Mountain View Yacht Club
13	Silver Sands Motel and Marina
14	Arthur A. Tilton Ice Rink
15	Fays Boat Yard
16	Glendale Docks/Marina/Beach
17	Winnepesaukee Yacht Club
18	Lincoln Park
19	Gilford Beach
20	Gunstock Mountain Resort
21	Community Center & Library
22	Elacoya State Park
Recreational Use	
Campground	
Golf, Tennis	
Boat Access, Fishing	
Golf, X Country Ski Trail	
Field Sports	
Field Sports	
Field Sports	
Skateboard Facility	
Gymnasium	
Natural Area	
Water Sports	
Water Sports	
Water Sports	
Water Sports	
Water Sports	
Boat Access, Water Sports	
Water Sports	
Swimming	
Campground, Sports	
Indoor Rec., Books, Trail Maps	
Campground/Beach	

Historical Locations

All historical locations in Gilford are located in the Historic District. Brief descriptions of the various locations can be found within the Natural Resource Inventory text.

Trails

This map shows trails within the Belknap Mountain Range, Kimball Castle/Lockes Hill, Ramblin' Veve Farm and Weeks Forest. Due to the complexity and small size of the Gunstock Mountain Trails, these trails are not displayed on this map. For more information on Gunstock Trails, visit www.gunstock.com.

Map can be purchased for many of the trails listed above at the Town Library.

Data

Besides data from the Base Map, this map contains the following:
Recreational Areas data taken from the archives of NHGRANT.
Trail Data from ten BRCC, Kimball Wildlife Forest Trail Guide Pamphlet, Weeks Woods Trail Guide, and Official Belknap County Snowmobile Map.



Digital data in NH GRANIT represent the efforts of the contributing agencies to record information from the cited source materials. Complex Systems Research Center (CSRC), under contract to the Office of Energy & Planning (OEP), and in conjunction with cooperating agencies, maintains a continuing program to identify and correct errors in these data. Neither OEP nor CSRC make any claim as to the validity or reliability or to any implied uses of these data.

As of March 2011, this data represents the best of our knowledge.

Gilford, NH
Natural Resources Inventory
March 2011

Figure 12