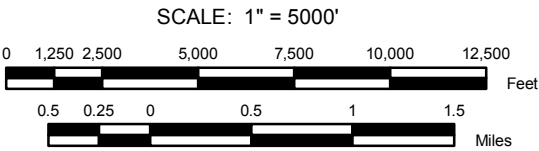


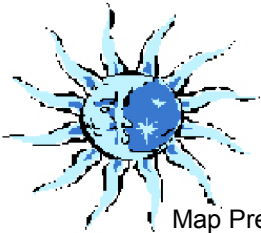
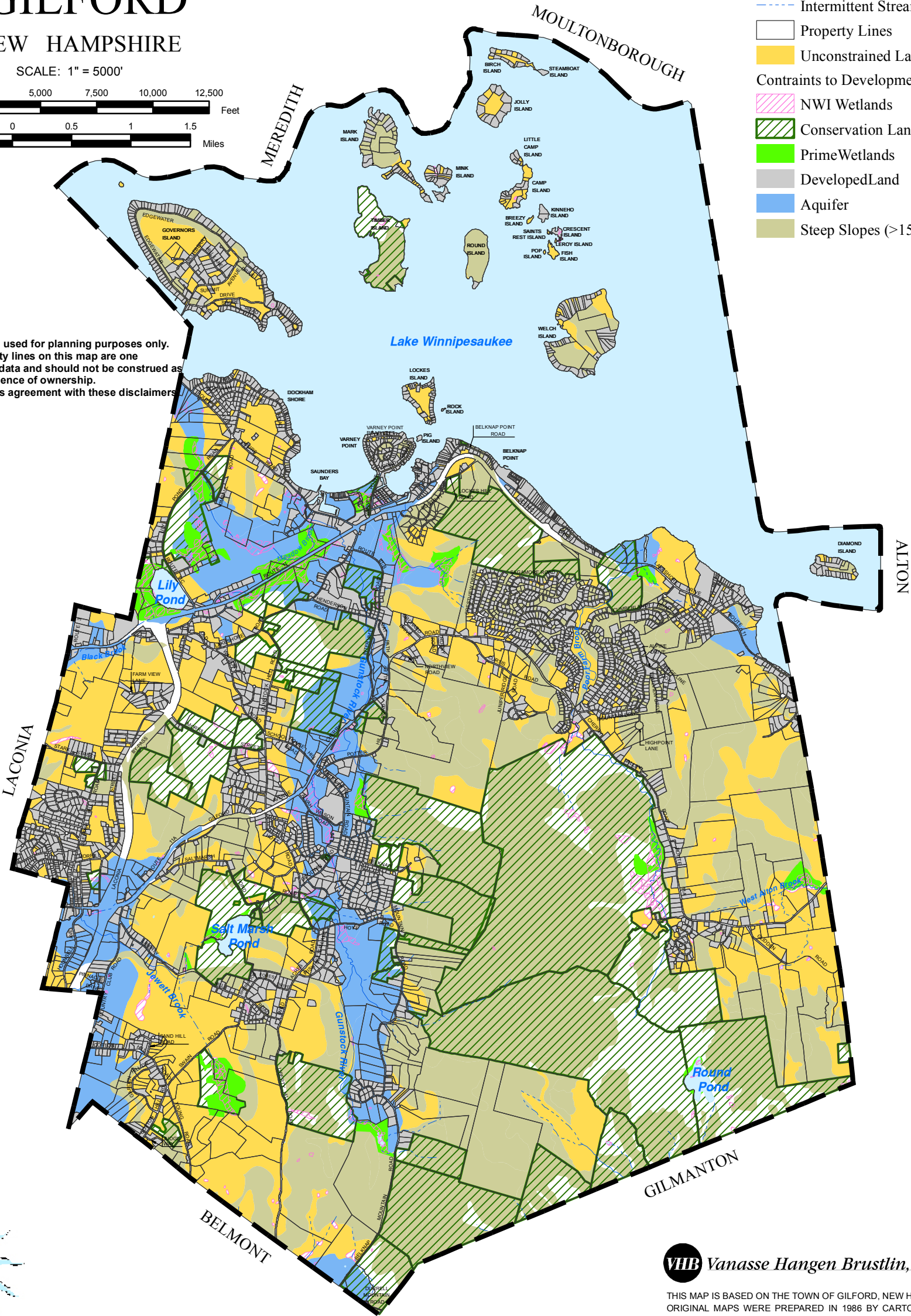
LANDS CONSTRAINED FOR DEVELOPMENT MAP
OF
GILFORD
NEW HAMPSHIRE



Legend

- Perennial Stream
- Intermittent Stream
- Property Lines
- Unconstrained Land
- Contraints to Development
 - NWI Wetlands
 - Conservation Land
 - PrimeWetlands
 - DevelopedLand
 - Aquifer
 - Steep Slopes (>15%)

This map is intended to be used for planning purposes only. Representations of property lines on this map are one interpretation of available data and should not be construed as binding or conclusive evidence of ownership. Use of this map constitutes agreement with these disclaimers



Map Prepared By Blue Moon Environmental, Inc.

VHB Vanasse Hangen Brustlin, Inc.



THIS MAP IS BASED ON THE TOWN OF GILFORD, NEW HAMPSHIRE PROPERTY MAPS. ORIGINAL MAPS WERE PREPARED IN 1986 BY CARTOGRAPHIC ASSOCIATES, INC. A MAJOR REVISION OF THE MAPS AND DIGITAL DATA WAS PRODUCED IN 2005. THIS MAP IS INTENDED FOR REFERENCE AND PLANNING PURPOSES ONLY.

Town of Gilford
New Hampshire
Lands Constrained for Development

The Constrained Land Analysis Includes the Following Factors:

Steep Slopes (>15%)

Prime Wetlands

NWI Wetlands

Existing Development

Existing Conservation Land

Based on a selection of all parcels < 5 acres in size with an existing building footprint located on it. In addition, larger parcels consisting of schools, multifamily housing, and commercial/industrial developments were included. Open areas such as golf courses and other outdoor recreation areas were not included, as these areas could be sold and redeveloped in the future.

Aquifer Protection Overlay District

Data

Road, Property Line and Lake data provided by Cartographic Associates, Inc.
River and Stream data gathered from NHGRANT.
Conservation Land includes data from the Nature Conservancy and the NHGRANT database.



Digital data in NH GRANIT represent the efforts of the contributing agencies to record information from the cited source materials. Complex Systems Research Center (CSRC), under contract to the Office of State Planning (OSP), and in conjunction with cooperating agencies, maintains a continuing program to identify and correct errors in these data. Neither OSP nor CSRC make any claim as to the validity or reliability or to any implied uses of these data.
As of March 2011, this data represents the best of our knowledge.

Gilford, NH
Natural Resources Inventory
April 2011

Figure 22