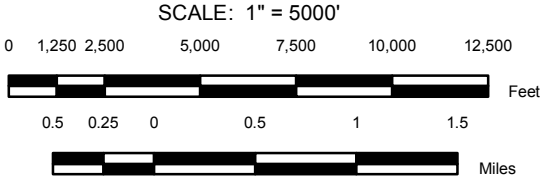


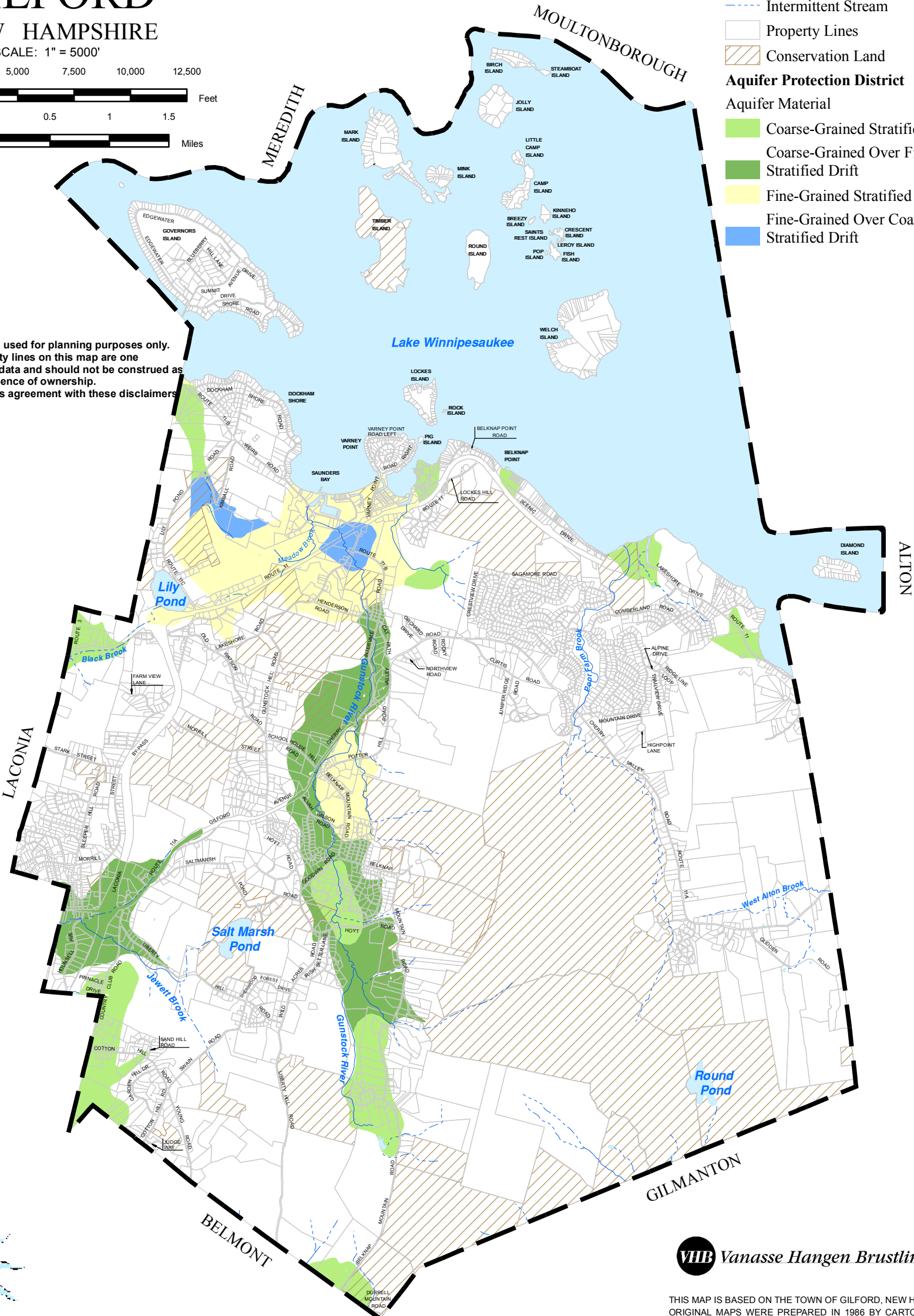
AQUIFER PROTECTION DISTRICT MAP
OF
GILFORD
NEW HAMPSHIRE



Legend

- Perenial Stream
- Intermittent Stream
- Property Lines
- Conservation Land
- Aquifer Protection District
- Aquifer Material
 - Coarse-Grained Stratified Drift
 - Coarse-Grained Over Fine-Grained Stratified Drift
 - Fine-Grained Stratified Drift
 - Fine-Grained Over Coarse Grained Stratified Drift

This map is intended to be used for planning purposes only. Representations of property lines on this map are one interpretation of available data and should not be construed as binding or conclusive evidence of ownership. Use of this map constitutes agreement with these disclaimers.



Map Prepared By Blue Moon Environmental, Inc.

VHB Vanasse Hangen Brustlin, Inc.



THIS MAP IS BASED ON THE TOWN OF GILFORD, NEW HAMPSHIRE PROPERTY MAPS. ORIGINAL MAPS WERE PREPARED IN 1986 BY CARTOGRAPHIC ASSOCIATES, INC. A MAJOR REVISION OF THE MAPS AND DIGITAL DATA WAS PRODUCED IN 2005. THIS MAP IS INTENDED FOR REFERENCE AND PLANNING PURPOSES ONLY.

Town of Gilford New Hampshire Aquifer Protection District Map

Article 19 in Gilford's Zoning Ordinance is an Aquifer Protection District. Its purpose is to protect, preserve, and maintain potential groundwater supplies and related groundwater recharge areas within known aquifers.

The boundaries set in this ordinance restricts the district by 50' outward from the outermost edge of the surficial extent of all stratified drift aquifer deposits. For more information, see Gilford's Zoning Ordinances.

This map differentiates Gilford's aquifers by stratified drift material type.

Data

Besides data from the Base Map, this map contains the following:
Aquifer Data from NH DES and the Town of Gilford.
Gilford Zoning Ordinance Article 19.



Digital data in NH GRANIT represent the efforts of the contributing agencies to record information from the cited source materials. Complex Systems Research Center (CSRC), under contract to the Office of Energy & Planning (OEP), and in conjunction with cooperating agencies, maintains a continuing program to identify and correct errors in these data. Neither OEP nor CSRC make any claim as to the validity or reliability or to any implied uses of these data.

As of March 2011, this data represents the best of our knowledge.

Gilford, NH
Natural Resources Inventory
March 2011
Figure 10