

BASE MAP
OF
GILFORD
NEW HAMPSHIRE

SCALE: 1" = 5000'

0 1,250 2,500 5,000 7,500 10,000 12,500

Feet

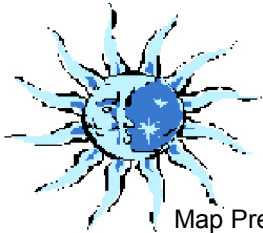
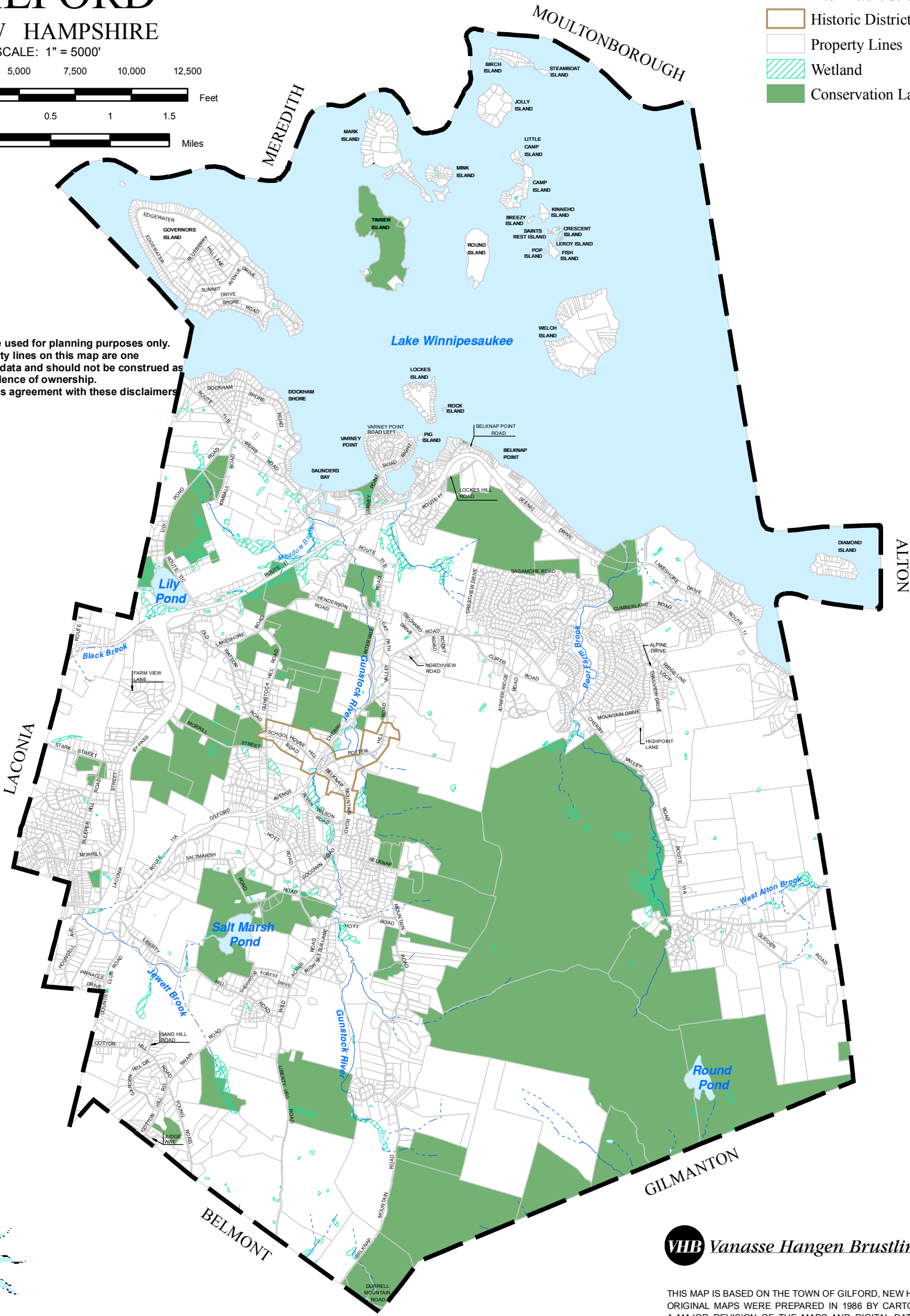
0.5 0.25 0 0.5 1 1.5

Miles

Legend

- Perennial Stream
- Intermittent Stream
- Historic District
- Property Lines
- Wetland
- Conservation Land

This map is intended to be used for planning purposes only. Representations of property lines on this map are one interpretation of available data and should not be construed as binding or conclusive evidence of ownership. Use of this map constitutes agreement with these disclaimers.



Map Prepared By Blue Moon Environmental, Inc.

VHB Vanasse Hangen Brustlin, Inc.



THIS MAP IS BASED ON THE TOWN OF GILFORD, NEW HAMPSHIRE PROPERTY MAPS. ORIGINAL MAPS WERE PREPARED IN 1986 BY CARTOGRAPHIC ASSOCIATES, INC. A MAJOR REVISION OF THE MAPS AND DIGITAL DATA WAS PRODUCED IN 2005. THIS MAP IS INTENDED FOR REFERENCE AND PLANNING PURPOSES ONLY.

Town of Gilford
New Hampshire
Base Map

Purpose of Base Map

The Base Map is a primary map to any Natural Resource Inventory. It shows the base features of teh community without any additional resources or map features. Many to the features shown on the Base Map also appear on the other maps in this series

Data

Road, Property Line and Lake data provided by Cartographic Associates, Inc.
River and Stream data gathered from NHGRANT.
Conservation Land includes data from the Nature Conservancy and the NHGRANT database.



Digital data in NH GRANIT represent the efforts of the contributing agencies to record information from the cited source materials. Complex Systems Research Center (CSRC), under contract to the Office of State Planning (OSP) and in conjunction with cooperating agencies, maintains a continuing program to identify and correct errors in these data. Neither OSP nor CSRC make any claim as to the validity or reliability or to any implied uses of these data.

As of March 2011, this data represents the best of our knowledge.

Gilford, NH
Natural Resources Inventory
March 2011
Figure 1