

SCENIC RESOURCES MAP
OF
GILFORD
NEW HAMPSHIRE

SCALE: 1" = 5000'

0 1,250 2,500 5,000 7,500 10,000 12,500

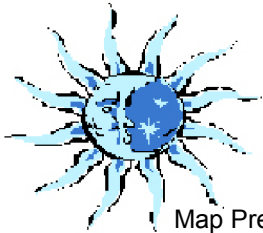
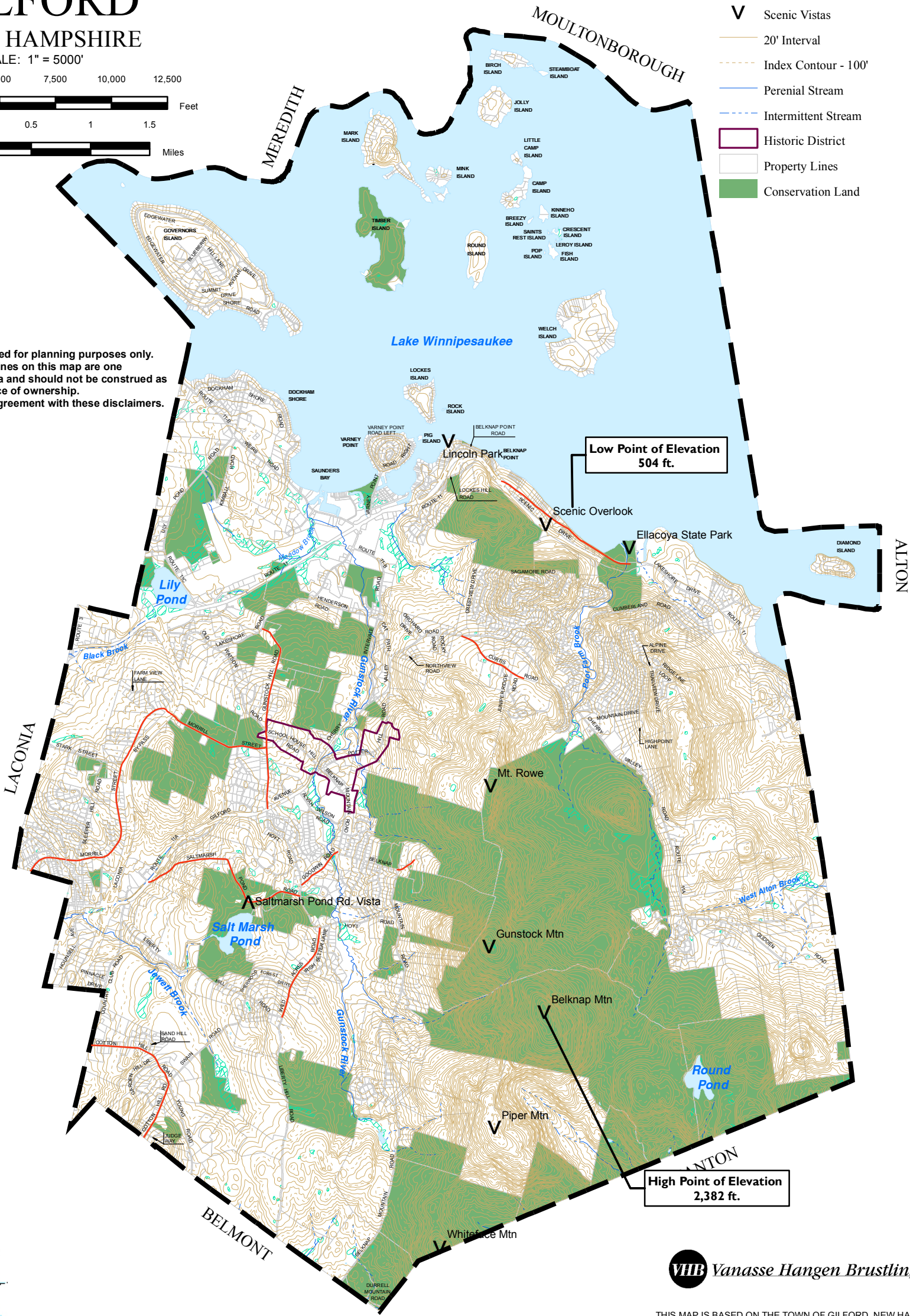
0.5 0.25 0 0.5 1 1.5 Feet

Miles

Legend

- Scenic Road
- Scenic Vistas
- 20' Interval
- Index Contour - 100'
- Perennial Stream
- Intermittent Stream
- Historic District
- Property Lines
- Conservation Land

This map is intended to be used for planning purposes only. Representations of property lines on this map are one interpretation of available data and should not be construed as binding or conclusive evidence of ownership. Use of this map constitutes agreement with these disclaimers.



Map Prepared By Blue Moon Environmental, Inc.



Vanasse Hangen Brustlin, Inc.



THIS MAP IS BASED ON THE TOWN OF GILFORD, NEW HAMPSHIRE PROPERTY MAPS. ORIGINAL MAPS WERE PREPARED IN 1986 BY CARTOGRAPHIC ASSOCIATES, INC. A MAJOR REVISION OF THE MAPS AND DIGITAL DATA WAS PRODUCED IN 2005. THIS MAP IS INTENDED FOR REFERENCE AND PLANNING PURPOSES ONLY.

Town of Gilford
New Hampshire
Scenic Resources Map

Topography

Topography is the surface configuration of an area, usually defined in terms of elevation and slope.

Topography affects climate, erosion, vegetative growth, and other natural processes. Topography can easily affect human activity, from zoning to recreational activities. Topographic relief provides scenic vistas and viewsheds.

Topography within Gilford ranges from a low elevation of 504 ft at Lake Winnepesaukee to a high elevation of 2,382 ft on Belknap mountain.

Scenic Vistas

Scenic Roads

Belknap Mtn	Cotton Hill Road
Ellacoya State Park	Curtis Road
Gunstock Mtn	Goodwin Road
Lincoln Park	Gunstock Hill Road
Mt. Rowe	Saltmarsh Pond Road
Piper Mtn	Scenic Drive
Saltmarsh Pond Rd. Vista	Morrill Street
Scenic Overlook	Weeks Road
Whiteface Mtn	

Data

Besides data from the Base Map, this map contains the following:

Contour data provided by the Society for the Protection of NH Forests, based on GRANIT digital raster graphs of USGS Topography.
Summit and mountain information is based on USGS 7.5 minute Topographic quadrangles.



Digital data in NH GRANIT represent the efforts of the contributing agencies to record information from the cited source materials. Complex Systems Research Center (CSRC), under contract to the Office of Energy & Planning (OEP), and in conjunction with cooperating agencies, maintains a continuing program to identify and correct errors in these data. Neither OEP nor CSRC make any claim as to the validity or reliability or to any implied uses of these data.

As of March 2011, this data represents the best of our knowledge.

Gilford, NH
Natural Resources Inventory
March 2011
Figure 2