

SURFACE WATER FEATURES MAP
OF

GILFORD
NEW HAMPSHIRE

SCALE: 1" = 5000'

0 1,250 2,500 5,000 7,500 10,000 12,500

Feet

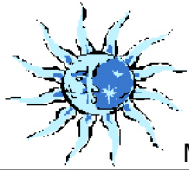
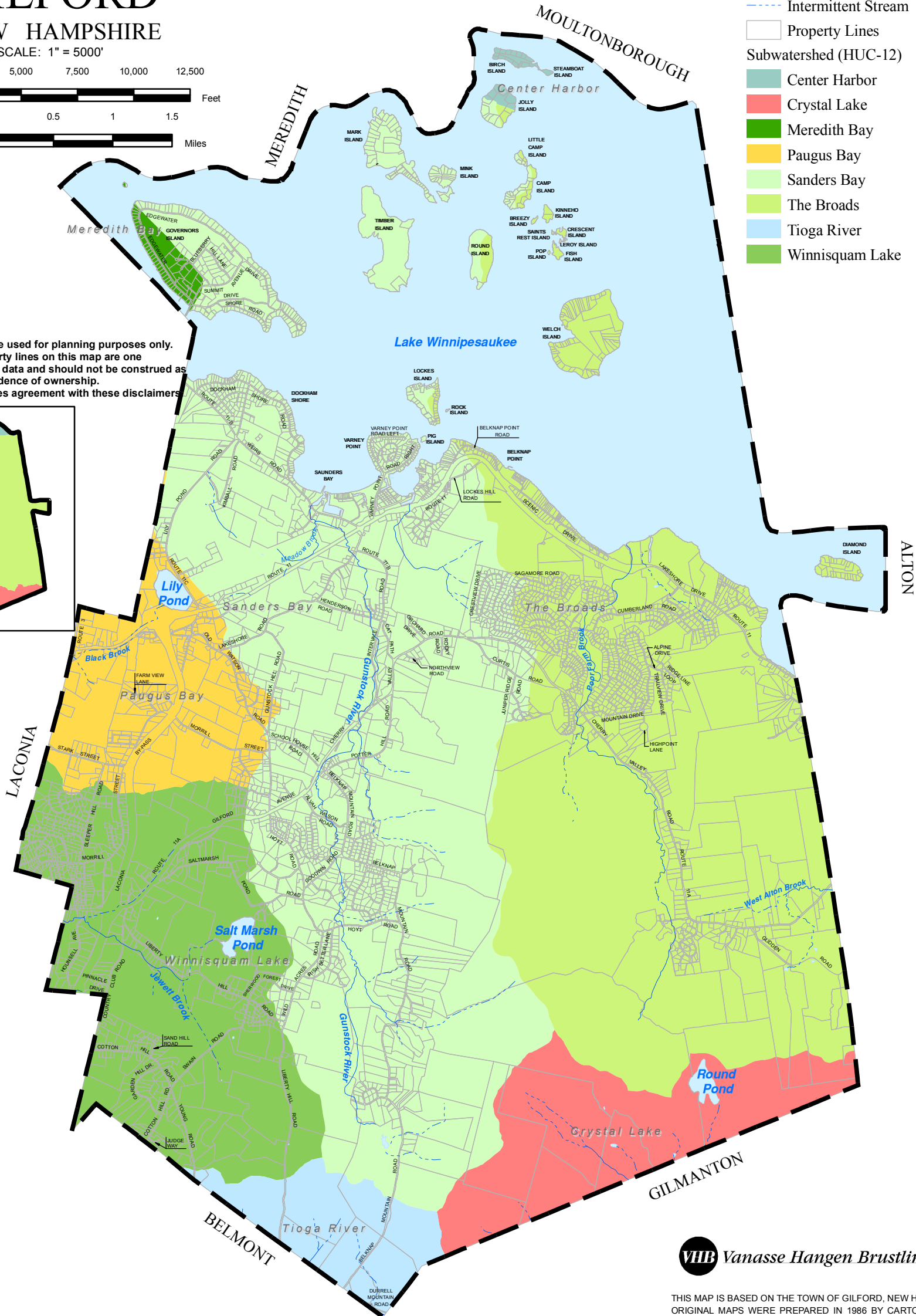
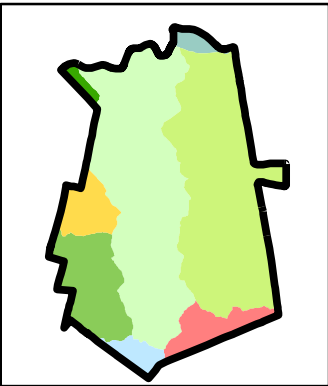
0.5 0.25 0 0.5 1 1.5

Miles

Legend

- Perennial Stream
- Intermittent Stream
- Property Lines
- Subwatershed (HUC-12)
 - Center Harbor
 - Crystal Lake
 - Meredith Bay
 - Paugus Bay
 - Sanders Bay
 - The Broads
 - Tioga River
 - Winnisquam Lake

This map is intended to be used for planning purposes only. Representations of property lines on this map are one interpretation of available data and should not be construed as binding or conclusive evidence of ownership. Use of this map constitutes agreement with these disclaimers.



Map Prepared By Blue Moon Environmental, Inc.



Vanasse Hangen Brustlin, Inc.



THIS MAP IS BASED ON THE TOWN OF GILFORD, NEW HAMPSHIRE PROPERTY MAPS. ORIGINAL MAPS WERE PREPARED IN 1986 BY CARTOGRAPHIC ASSOCIATES, INC. A MAJOR REVISION OF THE MAPS AND DIGITAL DATA WAS PRODUCED IN 2005. THIS MAP IS INTENDED FOR REFERENCE AND PLANNING PURPOSES ONLY.

Town of Gilford
New Hampshire
Surface Water Features Map

Surface Water	Total Acres
Lily Pond	51
Round Pond	18
Saltmarsh Pond	39
Belknap Recreation Area Pond	6
Lake Winnepesaukee	9004

Watershed

Watersheds are areas that contribute runoff to a particular water body measured at a designated outlet point. Virtually any body of water has an area of upland surrounding it that drains to it which can be delineated as a watershed. Therefore, almost any watershed can be further divided into subwatersheds, depending on which body of water and which outlet is designated for the watershed.

Watershed	Total Acres	Watershed
Winnepesaukee River	152,477	
Merrimack River	17,375	
Total Area in Gilford	169,852	
Subwatershed	Total Acres	Watershed
Center Harbor	20016	Winnepesaukee River
Crystal Lake	17375	Merrimack River
Meredith Bay	8823	Winnepesaukee River
Paugus Bay	7530	Winnepesaukee River
Sanders Bay	17943	Winnepesaukee River
The Broads	38888	Winnepesaukee River
Tioga River	18583	Winnepesaukee River
Winnisquam Lake	40694	Winnepesaukee River

Data

Besides data from the Base Map, this map contains the following:
Watershed data gathered taken from the archives of NHGRANT.



Digital data in NH GRANIT represent the efforts of the contributing agencies to record information from the cited source materials. Complex Systems Research Center (CSRC), under contract to the Office of Energy & Planning (OEP), and in conjunction with cooperating agencies, maintains a continuing program to identify and correct errors in these data. Neither OEP nor CSRC make any claim as to the validity or reliability or to any implied uses of these data.

As of March 2011, this data represents the best of our knowledge.

Gilford, NH
Natural Resources Inventory
March 2011
Figure 8