

CONSERVATION LANDS MAP
OF
GILFORD
NEW HAMPSHIRE

SCALE: 1" = 5000'

0 1,250 2,500 5,000 7,500 10,000 12,500

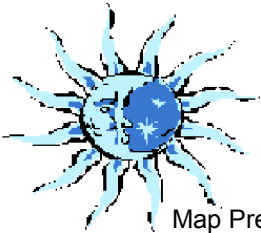
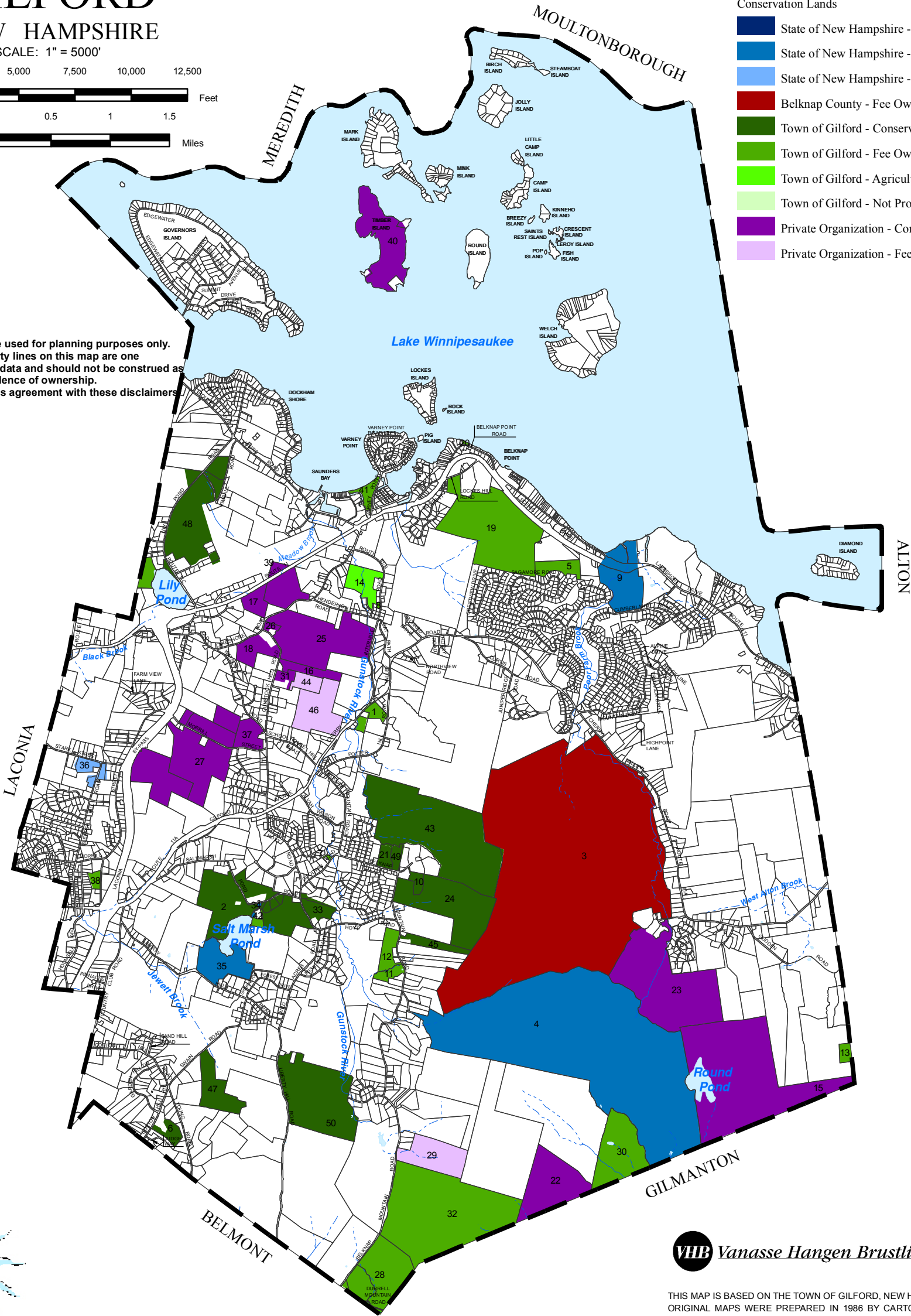
0.5 0.25 0 0.5 1 1.5 Feet

0.5 0.25 0 0.5 1 1.5 Miles

This map is intended to be used for planning purposes only. Representations of property lines on this map are one interpretation of available data and should not be construed as binding or conclusive evidence of ownership. Use of this map constitutes agreement with these disclaimers.

Legend

- Perennial Stream
- Intermittent Stream
- Conservation Lands
 - State of New Hampshire - Conservation Easement
 - State of New Hampshire - Fee Ownership
 - State of New Hampshire - Agricultural Restriction
 - Belknap County - Fee Ownership
 - Town of Gilford - Conservation Easement
 - Town of Gilford - Fee Ownership
 - Town of Gilford - Agricultural Restriction
 - Town of Gilford - Not Protected
 - Private Organization - Conservation Easement
 - Private Organization - Fee Ownership



Map Prepared By Blue Moon Environmental, Inc.

VHB Vanasse Hangen Brustlin, Inc.



THIS MAP IS BASED ON THE TOWN OF GILFORD, NEW HAMPSHIRE PROPERTY MAPS. ORIGINAL MAPS WERE PREPARED IN 1986 BY CARTOGRAPHIC ASSOCIATES, INC. A MAJOR REVISION OF THE MAPS AND DIGITAL DATA WAS PRODUCED IN 2005. THIS MAP IS INTENDED FOR REFERENCE AND PLANNING PURPOSES ONLY.

Town of Gilford
New Hampshire
Conservation Lands Map

The conservation lands displayed on this map are color-coded based on a classification by primary protecting organization and by the protection type. The primary protecting organization is the Town of Gilford, the State of New Hampshire, or some private organization such as land trust or other private conservation-minded organization.

Protection Type

The two main classes are fee ownership and conservation easement. Fee ownership, or FO, establishes the town, another governmental entity, or a conservation organization as owner of the conservation parcel, to protect through their own means. Conservation easement, or CE, allows the land to be owned by anyone, but is protected through an easement (or deed restriction) held by the town, another governmental entity, or a conservation organization. AR, or Agricultural Preservation Restriction, restricts the use of development to agricultural purposes only. These lands are typically private access only.

Num.	Conservation Land	Acres	Num.	Conservation Land	Acres
1	Allen Lot (2 lots)	17.9	26	Parkman D. Howe Jr. Trust	5.3
2	Bean	103.2	27	Persons (3 lots)	237.8
3	Belknap County Recreation	1707.1	28	Peverly Lot	136.6
4	Belknap Mountain State Forest	1344.5	29	Pipe Mountain Conservation	89.4
5	Brookside Crossing Corp.	27.5	30	Pipe/Whiteface	14.4
6	Carson	17.1	31	Pomeroy	10.2
7	Devino	1.2	32	Powell Associates Lot	403.7
8	Eastman	0.9	33	Rogers	25.3
9	Eliaoya State Park	104.6	34	Salmarsh Pond Boat Launch	2.2
10	Evvard	7.6	35	Salmarsh Pond State Forest	70.9
11	Francie	5.3	36	Sleeper - Agric. Pres. Rest.	24
12	Francie Trustee	26.7	37	Smart	31.9
13	Gardner	9.9	38	Stone Road Park	8.3
14	Harris Farm	40.5	39	Tilton (2 lots)	56.3
15	Hidden Valley	3026.6	40	Timber Island	127.3
16	Howe #1	22.6	41	Town Beach	16.6
17	Howe #2	27.7	42	Town of Gilford	5.4
18	Howe #3	35.3	43	Weeks	146.8
19	Kimball Castle	291.2	44	Weeks Forest	21.9
20	Lincoln Park	0.76	45	Westgren	11.9
21	McLaughlin	11.9	46	Wilson-Weeks Forest	85.7
22	Mitchell 2006 Trust	338.1	47	Phillip A. Roux Trust	61.92
23	Mooney	306.5	48	Airport	168
24	Muehle	169	49	Campbell	8
25	P. Howe III	186.4	50	Winshelo Forest	210.5

Data

Besides data from the Base Map, this map contains the following:

Conservation Land includes data from the Nature Conservancy, Town of Gilford, and the NHGRANT database.



Digital data in NH GRANIT represent the efforts of the contributing agencies to record information from the cited source materials. Complex Systems Research Center (CSRC), under contract to the Office of State Planning (OSP) and in conjunction with cooperating agencies, maintains a continuing program to identify and correct errors in these data. Neither OSP nor CSRC make any claim as to the validity or reliability or to any implied uses of these data.

As of January 2010, this data represents the best of our knowledge.

Gilford, NH
Natural Resources Inventory
March 2011

Figure 13