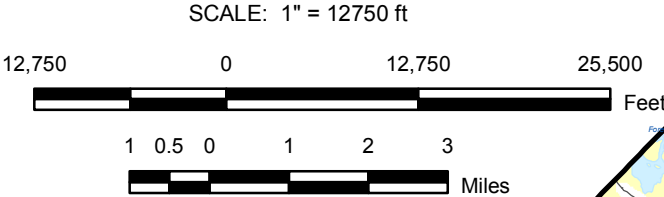
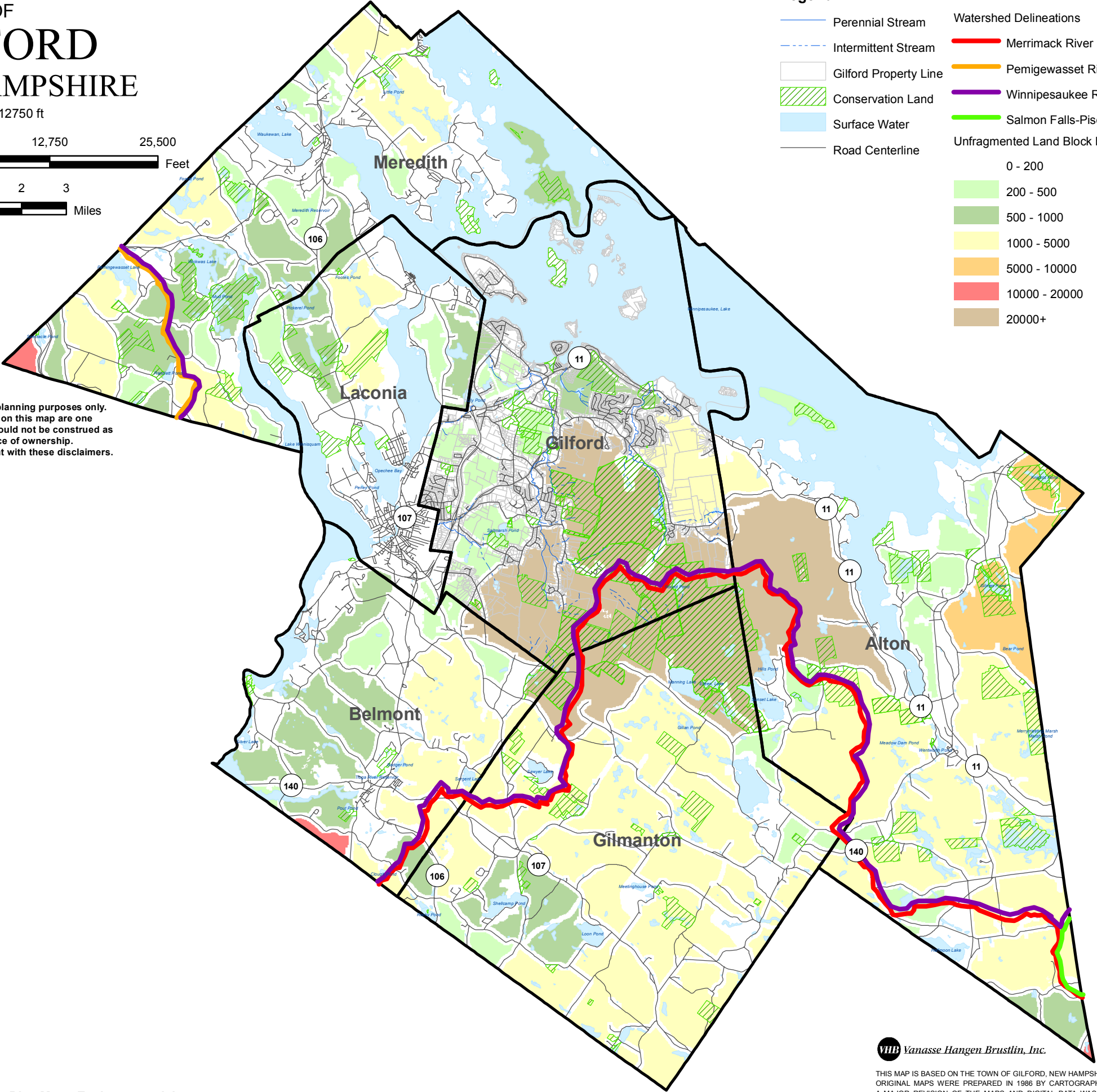


REGIONAL UNFRAGMENTED LANDS MAP  
OF  
**GILFORD**  
NEW HAMPSHIRE



This map is intended to be used for planning purposes only. Representations of property lines on this map are one interpretation of available data and should not be construed as binding or conclusive evidence of ownership. Use of this map constitutes agreement with these disclaimers.



**Town of Gilford**  
*New Hampshire*  
Regional Unfragmented Lands  
Map

The Town of Gilford has approximately 34,244 Acres.  
The following towns surround Gilford, and are located on this map:

<b>Alton</b>	53,230 Acres
<b>Belmont</b>	20,427 Acres
<b>Gilmananton</b>	38,127 Acres
<b>Laconia</b>	16,712 Acres
<b>Meredith</b>	34,920 Acres

**Watershed**  
Watersheds are areas that contribute runoff to a particular water body measured at a designated outlet point. Virtually any body of water has an area of upland surrounding it that drains to it which can be delineated as a watershed. Therefore, almost any watershed can be further divided into subwatersheds, depending on which body of water and which outlet is designated for the watershed.

**Conservation Land**  
While most Conservation Lands are undivided by town boundaries, there are some protected lands which, due to their large capacity of undeveloped space, are found in multiple towns. For example, the Hidden Valley Conservation Easement can be found within Gilford, Gilmananton, and Alton. These types of conservation lands help protect large unfragmented blocks, and are extremely important.

**Unfragmented Land Blocks**  
Unfragmented land blocks are undeveloped sections of landscape with few or no roads. Only Class V and Class VI roads are included, because these types of roads aren't considered significant barriers to wildlife (and many can be regarded as trails). These blocks are of high significance to wildlife and identify large areas of open space.

This map was created to show surrounding areas unaffected by townlines. It is important to note that some unfragmented land blocks which seem small within the Town of Gilford are extraordinarily larger when town boundaries are ignored.

**Data**  
Besides data from the Base Map, this map has the following:  
Conservation Land layer includes data from the Nature Conservancy, the Belknap Range Conservation Coalition, and NH GRANIT Database. Town lines, Watershed, Stream and Road data from NH GRANIT Database. Unfragmented Lands from NH Fish & Game Department's Wildlife Action Plan.

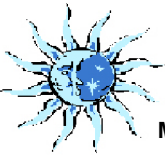


Digital data in NH GRANIT represent the efforts of the contributing agencies to record information from the cited source materials. Complex Systems Research Center (CSRC), under contract to the Office of State Planning (OSP), and in conjunction with cooperating agencies, maintains a continuing program to identify and correct errors in these data. Neither OSP nor CSRC make any claim as to the validity or reliability or to any implied uses of these data.

As of January 2010, this data represents the best of our knowledge.

Gilford, NH  
Natural Resources Inventory

January 2010 **Figure 15**



Map Prepared By Blue Moon Environmental, Inc.

**VHB** Vanasse Hangen Brustlin, Inc.

THIS MAP IS BASED ON THE TOWN OF GILFORD, NEW HAMPSHIRE PROPERTY MAPS. ORIGINAL MAPS WERE PREPARED IN 1986 BY CARTOGRAPHIC ASSOCIATES, INC. A MAJOR REVISION OF THE MAPS AND DIGITAL DATA WAS PRODUCED IN 2005. THIS MAP IS INTENDED FOR REFERENCE AND PLANNING PURPOSES ONLY.

