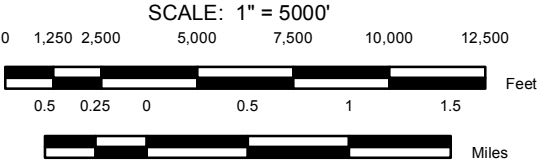


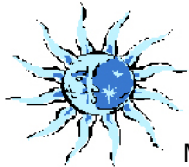
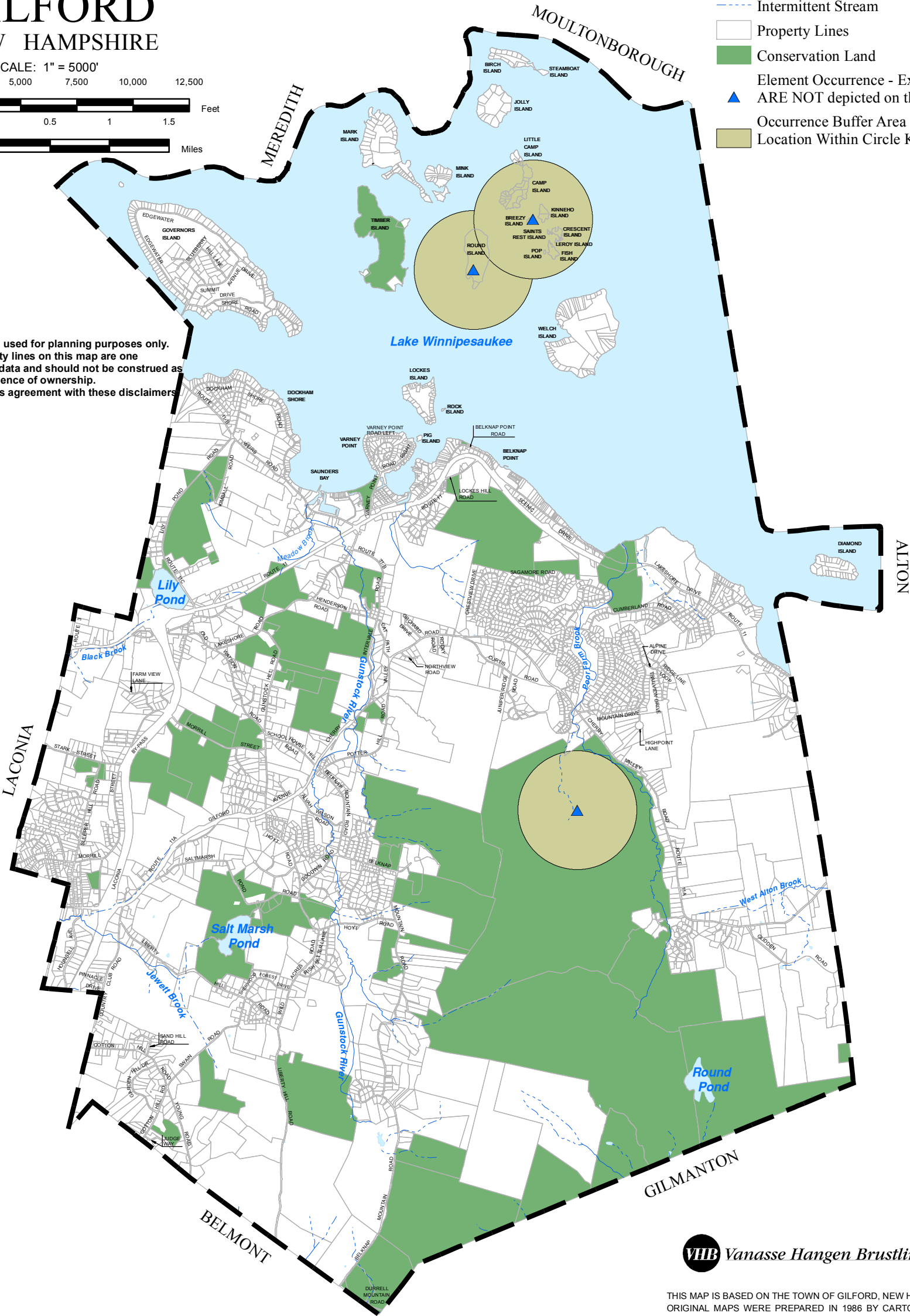
NH NATURAL HERITAGE BUREAU  
SENSITIVE SPECIES & COMMUNITIES MAP  
OF  
GILFORD  
NEW HAMPSHIRE



This map is intended to be used for planning purposes only. Representations of property lines on this map are one interpretation of available data and should not be construed as binding or conclusive evidence of ownership. Use of this map constitutes agreement with these disclaimers.

Legend

- Perennial Stream
- Intermittent Stream
- Property Lines
- Conservation Land
- Element Occurrence - Exact locations ARE NOT depicted on this map
- Occurrence Buffer Area - Precise Location Within Circle Known



Map Prepared By Blue Moon Environmental, Inc.

**VHB** Vanasse Hangen Brustlin, Inc.



THIS MAP IS BASED ON THE TOWN OF GILFORD, NEW HAMPSHIRE PROPERTY MAPS. ORIGINAL MAPS WERE PREPARED IN 1986 BY CARTOGRAPHIC ASSOCIATES, INC. A MAJOR REVISION OF THE MAPS AND DIGITAL DATA WAS PRODUCED IN 2005. THIS MAP IS INTENDED FOR REFERENCE AND PLANNING PURPOSES ONLY.

# Town of Gilford New Hampshire

## NH Natural Heritage Bureau Sensitive Species & Communities Map

NH NATURAL HERITAGE BUREAU DATA

This map illustrates the general locations of rare plants, wildlife, and natural communities (natural communities are different types of wetlands, forests, etc.). Precise locations are not shown due to the data's sensitive nature. The NH Natural Heritage Bureau's database contains more detailed information including locations, population sizes, and habitat descriptions.

Please contact the Natural Heritage Bureau at (603) 271-2214 for more information.

Wildlife occurrences are compiled and displayed in cooperation with the NH Fish & Game Department's Nongame Program, who may be reached at (603) 271-2462.

### Declared Sensitive Species

The New Hampshire Natural Heritage Bureau (NHNHB), along with the N.H. Fish & Game Wildlife Department, maintains an inventory of each town's species of concern. Species of concern are those species that are listed as endangered, threatened, or species that need to be maintained throughout each community.

Name	# of locations Reports in the last 20 Years	Status
<b>Plants</b>		
Sago Pondweed	9	Endangered
Three-Birds Orchid	27	Threatened
<b>Venerebrates - Birds</b>		
Bald Eagle	34	Threatened
Common Loon	270	Threatened
<b>Venerebrates - Amphibians</b>		
Northern Leopard Frog	17	Special Concern

### Data

Besides data from the Base Map, this map has the following:  
Rare and endangered species, natural communities data provided by the NH Natural Heritage Bureau.



Digital data in NH GRANIT represent the efforts of the contributing agencies to record information from the cited source materials. Complex Systems Research Center (CSRC), under contract to the Office of Energy & Planning (OEP), and in conjunction with cooperating agencies, maintains a continuing program to identify and correct errors in these data. Neither OEP nor CSRC make any claim as to the validity or reliability or to any implied uses of these data.

As of March 2011, this data represents the best of our knowledge.

Gilford, NH  
Natural Resources Inventory  
March 2011

Figure 17