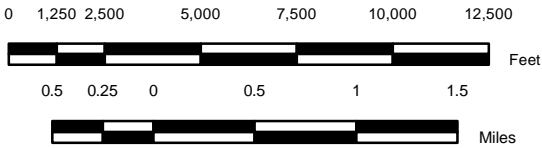


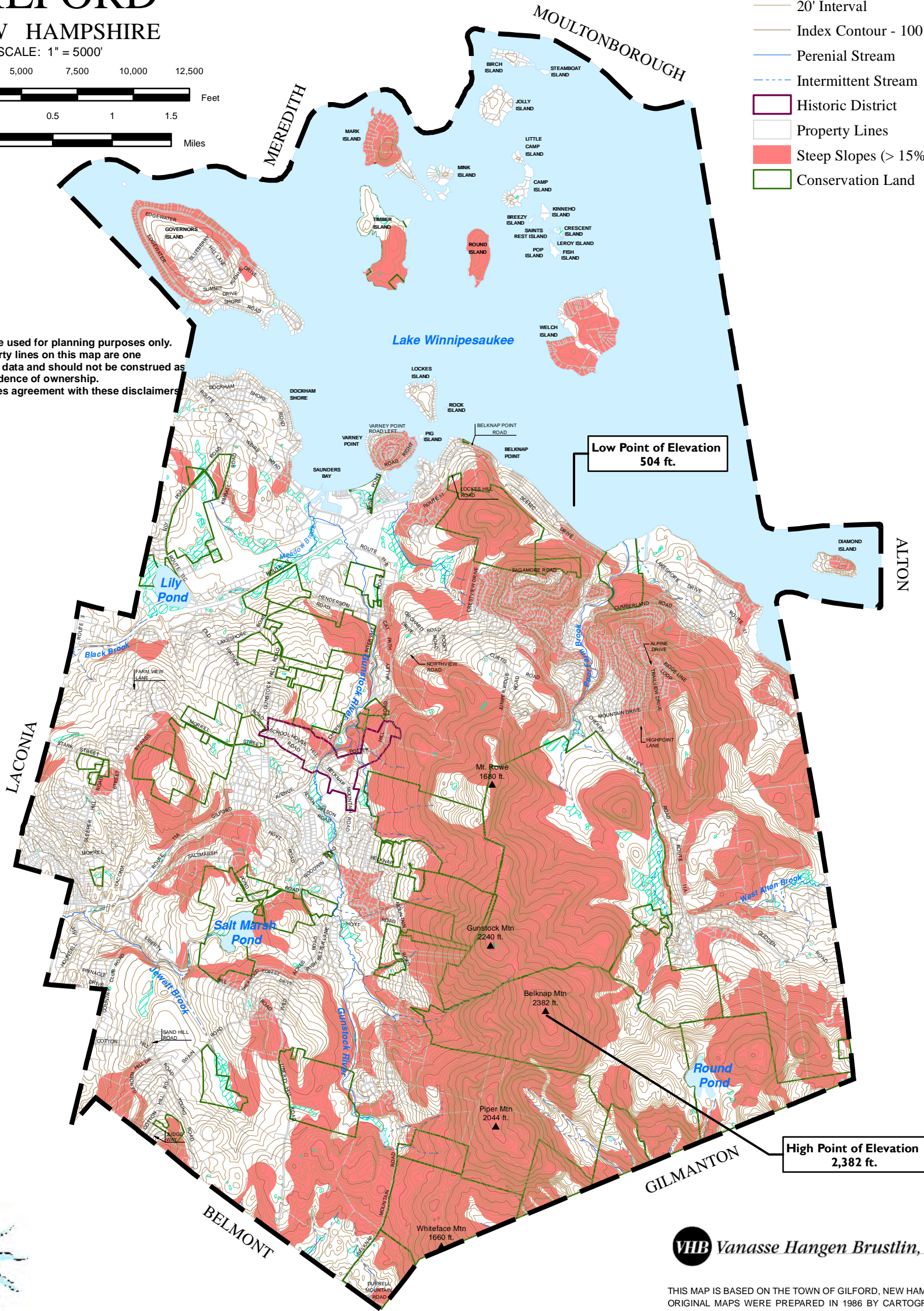
STEEP SLOPES MAP
OF
GILFORD
NEW HAMPSHIRE

SCALE: 1" = 5000'



- Legend**
- ▲ Summit
 - 20' Interval
 - Index Contour - 100'
 - Perennial Stream
 - - - Intermittent Stream
 - Historic District
 - Property Lines
 - Steep Slopes (> 15%)
 - Conservation Land

This map is intended to be used for planning purposes only. Representations of property lines on this map are one interpretation of available data and should not be construed as binding or conclusive evidence of ownership. Use of this map constitutes agreement with these disclaimers.



Map Prepared By Blue Moon Environmental, Inc.

VHB *Vanasse Hangen Brustlin, Inc.*

THIS MAP IS BASED ON THE TOWN OF GILFORD, NEW HAMPSHIRE PROPERTY MAPS. ORIGINAL MAPS WERE PREPARED IN 1986 BY CARTOGRAPHIC ASSOCIATES, INC. A MAJOR REVISION OF THE MAPS AND DIGITAL DATA WAS PRODUCED IN 2005. THIS MAP IS INTENDED FOR REFERENCE AND PLANNING PURPOSES ONLY.

Town of Gilford
New Hampshire
Steep Slopes Map

Steep Slopes

According to the NHDES Website, most communities define steep slopes as having a grade of 15% or greater; meaning that the elevation increases by 15 feet over horizontal distance of 100 feet.

Steep slopes are important to recognize because they can have severe impacts on development. Any change in equilibrium, whether caused by natural phenomena or human activity, can cause erosions and landslides.

Topography

Topography is the surface configuration of an area, usually defined in terms of elevation and slope.

For more information see Gilford's Scenic Resources Map.

Data

Besides data from the Base Map, this map contains the following:

- Contour data provided by the Society for the Protection of NH Forests, based on GRANIT digital raster graphs of USGS Topography.
- Summit and mountain information is based on USGS 7.5 minute Topographic quadrangles.



Digital data in NH GRANIT represent the efforts of the contributing agencies to record information from the cited source materials. Complex Systems Research Center (CSRC), under contract to the Office of Energy & Planning (OEP), and in conjunction with cooperating agencies, maintains a continuing program to identify and correct errors in these data. Neither OEP nor CSRC make any claim as to the validity or reliability or to any implied uses of these data.

As of March 2011, this data represents the best of our knowledge.

Gilford, NH
Natural Resources Inventory
March 2011
Figure 3