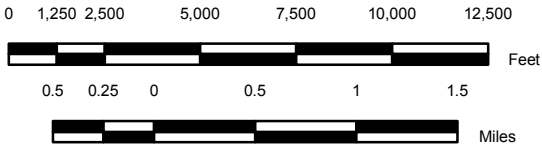


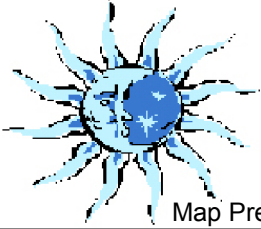
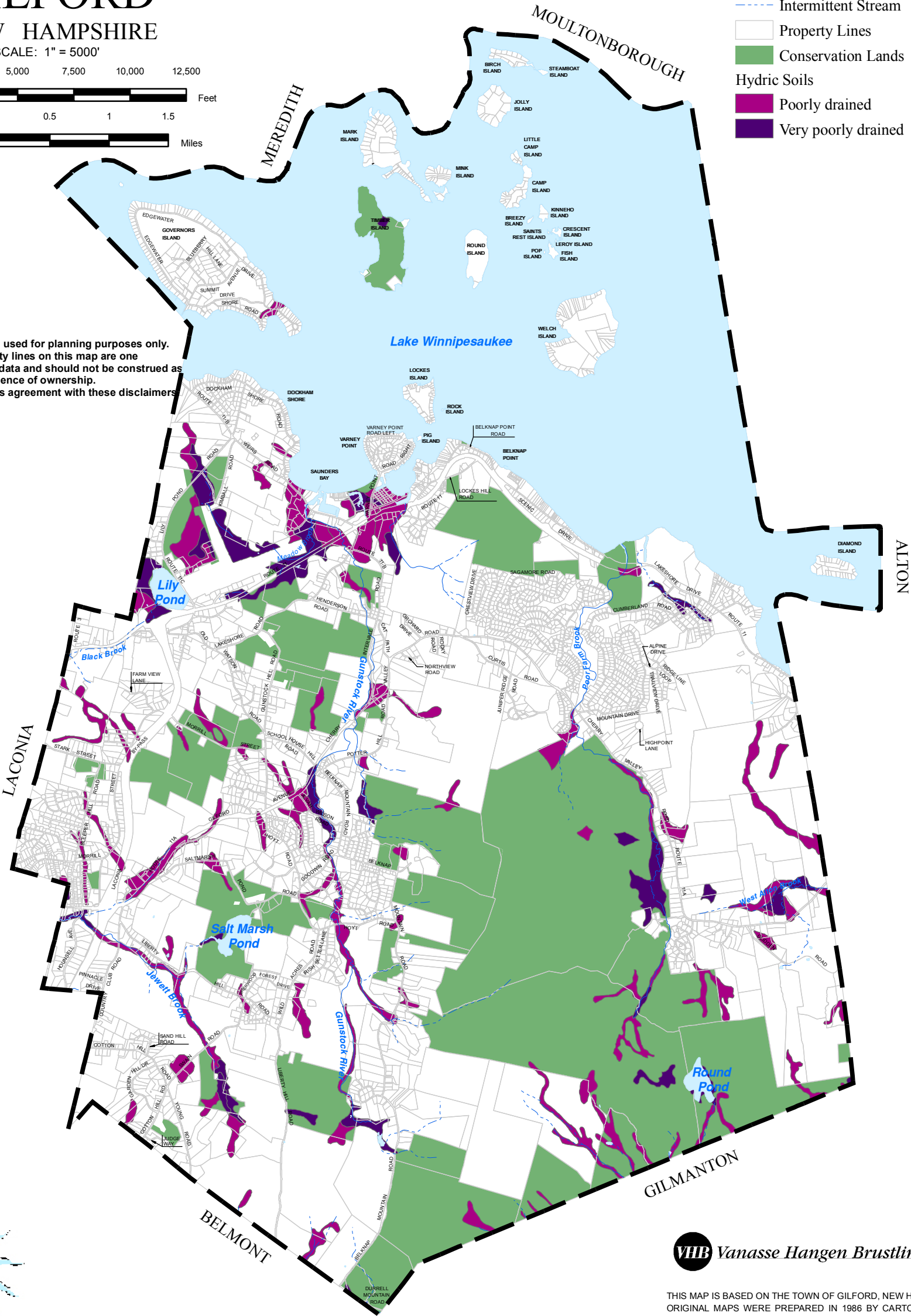
HYDRIC SOILS MAP  
OF  
**GILFORD**  
NEW HAMPSHIRE

SCALE: 1" = 5000'



**Legend**

- Perennial Stream
- Intermittent Stream
- Property Lines
- Conservation Lands
- Hydric Soils
  - Poorly drained
  - Very poorly drained



Map Prepared By Blue Moon Environmental, Inc.

**Vanasse Hangen Brustlin, Inc.**



THIS MAP IS BASED ON THE TOWN OF GILFORD, NEW HAMPSHIRE PROPERTY MAPS. ORIGINAL MAPS WERE PREPARED IN 1986 BY CARTOGRAPHIC ASSOCIATES, INC. A MAJOR REVISION OF THE MAPS AND DIGITAL DATA WAS PRODUCED IN 2005. THIS MAP IS INTENDED FOR REFERENCE AND PLANNING PURPOSES ONLY.

**Town of Gilford**  
**New Hampshire**  
*Hydric Soils Map*

**Hydric Soils**

NRCS defines hydric soil as, "soil that formed under conditions of saturation, flooding or ponding long enough during the growing season to develop anaerobic conditions in the upper part." As a result of soil saturation and reducing conditions, hydric soils undergo chemical reactions and physical processes that differ from those found in upland soils.

Hydric soils are soils developed under sufficiently wet conditions to support the growth and regeneration of hydrophytic vegetation; soils that are sufficiently wet because of artificial measures; and soils in which the hydrology has been artificially modified are hydric if the soil, in an unaltered state, was hydric. Some series that are designated as hydric have phases that are not hydric depending on water table, flooding, and ponding characteristics.

**Gilford Hydric Soils**

Gilford's hydric soils are either farmland of local importance or not prime farmland. Because hydric soils are poorly drained, they fall into the IIB or NC Forest soil class. For more information, see the Agricultural Soils and Forest Soils Maps.

Poorly Drained Soils	1263.7 Ac
Very Poorly Drained Soils	567 Ac

**Data**

Besides data from the Base Map, this map contains the following:

Soils data from USDA and the Natural Resources Conservation Service Soil Data Mart for Belknap County.  
Forest soil rating provided by the Society for the Protection of NH Forests



Digital data in NH GRANIT represent the efforts of the contributing agencies to record information from the cited source materials. Complex Systems Research Center (CSRC), under contract to the Office of Energy & Planning (OEP), and in conjunction with cooperating agencies, maintains a continuing program to identify and correct errors in these data. Neither OEP nor CSRC make any claim as to the validity or reliability or to any implied uses of these data.

As of March 2011, this data represents the best of our knowledge.